

BASEMENT HOPPER



NFRC AND ENERGY STAR® THERMAL DATA






The NFRC label provides the only reliable way to compare the energy efficiency, strength and durability of a window. The NFRC label appears on all fenestration products in the ENERGY STAR® program.

Compare U-Factor - The **LOWER** the U-Factor, the better it insulates, the **LOWER** your heating and cooling bills.

Compare Solar Heat Gain Coefficient - The **LOWER** the SHGC, the less solar heat your window transmits in summer, the **LOWER** your cooling costs.

Compare Visible Transmittance - Daylight and view are two of the fundamental attributes of a window. The **HIGHER** the VT the more **NATURAL LIGHT** is allowed into the home.

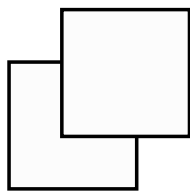
Look for ENERGY STAR® - ENERGY STAR qualified windows and doors **SAVE** energy, money and increase the comfort of your home.

| | | |
|---|--|---|
|  National Fenestration Rating Council® CERTIFIED | BFRich BASEMENT HOPPER <i>Windows & Doors</i> | |
| | PROJECTION WINDOW VINYL - SASH & FRAME - DOUBLE GLAZING | |
| ENERGY PERFORMANCE RATINGS | | |
| U-Factor (U.S./I-P) | Solar Heat Gain Coefficient | |
| ADDITIONAL PERFORMANCE RATINGS | | |
| Visible Transmittance | _____ | |
| <small>Manufacturer stipulates that these ratings conform to applicable NFRC procedures for determining whole product performance. NFRC ratings are determined for a fixed set of environmental conditions and a specific product size. NFRC does not recommend any product and does not warrant the suitability of any product for any specific use. Consult manufacturer's literature for other product performance information. www.nfrc.org</small> | | |
|  | | |
| <small>ENERGY STAR qualified versions of this product are available for the highlighted regions. Ask your sales person for details.</small> | |  |
| <small>Las versiones de los productos calificados ENERGY STAR están disponibles en las regiones seleccionadas. Para más detalles hable con el representante de ventas en la tienda.</small> | | |

BASEMENT HOPPER

Standard Features

- Welded Sash & Frame
- Rotating Arm Hinge
- Full Exterior Screen
- 1 lock < 28" width
- 2 locks ≥ 28" width
- Minimum size 14" x 12"
- Maximum size 50" x 30"
- Made every 1/8" width and height
- Master Frame Measures 2 1/2"
- Lifetime Limited Transferable Warranty



White Exterior
White Interior

ENERGY STAR Compliant By Zone

| | | | | |
|-----|---|----|----|---|
| YES | N | NC | SC | S |
| YES | N | NC | SC | S |
| YES | N | NC | SC | S |

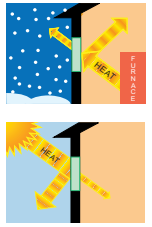
Manufacturer Product Description

| |
|--------------------|
| 2.5 SB70 Soft Coat |
| 2.5 SB70 Soft Coat |
| 2.5 SB70 Soft Coat |

Options

Low-E & Argon Insulating Glass

Our performance tested optional Low-E glass and Argon filled air space enhances the thermal efficiency of our windows. Warmer in the winter - Cooler in the summer.

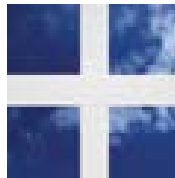


Laminated Tuff-Glass - Maximum security, sound reduction and UV protection can be achieved through the use of one piece of laminated glass in an insulating glass unit.



Grilles - Grilles are available in dimensional contour, V-Groove, STDL or standard flat design.

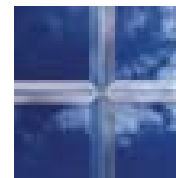
5/8" Flat
Internal Grilles



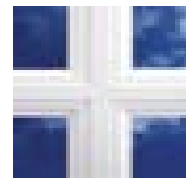
Contour
3/4" or 1" Internal Grilles



3/8" V-Groove
V-Groove is on the
Interior Surface



7/8" STDL
Simulated True Divided Lite
Interior & Exterior Grilles



BASEMENT HOPPER Window

| U-Factor | SHGC | VT | Gap Fill | Grids | Certified Product Number |
|----------|------|------|----------|-------|--------------------------|
| 0.28 | 0.27 | 0.50 | Argon | NA | BFR-M-28-00002-00001 |
| 0.28 | 0.24 | 0.46 | Argon | < 1" | BFR-M-28-00002-00002 |
| 0.28 | 0.22 | 0.41 | Argon | ≥ 1" | BFR-M-28-00002-00003 |



ENERGY STAR® Version 6 Qualification Criteria for Residential Windows



| Climate Zone | U-Factor ¹ Version 6.0 2015 | SHGC ² Version 6.0 2015 | U-Factor ¹ Version 6.0 2016 | SHGC ² Version 6.0 2016 |
|---------------|--|--|--|--|
| Northern* | ≤ 0.30 | Any | ≤ 0.27 | Any |
| - Equivalent | = 0.31 | ≥ 0.35 | = 0.28 | ≥ 0.32 |
| - Equivalent | = 0.32 | ≥ 0.40 | = 0.29 | ≥ 0.37 |
| - Equivalent | | | = 0.30 | ≥ 0.42 |
| North-Central | ≤ 0.30 | ≤ 0.40 | ≤ 0.30 | ≤ 0.40 |
| South-Central | ≤ 0.30 | ≤ 0.25 | ≤ 0.30 | ≤ 0.25 |
| Southern | ≤ 0.40 | ≤ 0.25 | ≤ 0.40 | ≤ 0.25 |

¹ Btu/h-ft² °F

² Fraction of incident solar radiation

Key: 2.5 = 2.5mm glass. SCSB70 = SunClean Solarban 70XL SB70 = Solarban 70XL.

There are many glass and/or grid configurations that affect a window's U-Factor, Solar Heat Gain Coefficient and Visible Transmittance. A complete list of configurations for B.F. Rich windows and doors can be found at www.nfrc.org in the Certified Products Directory.

©BFRich Co., Inc. 322 Ruthar Dr., Newark, DE 19711 www.BFRich.com 1-800-237-4241

80LBTEXT 01-15 Reorder - HP-#180082